

6 Burton Place, Manchester, Lancashire, M15 4PT  
Tel: 0161 637 8336  
Email: [contactus@ascendproperties.com](mailto:contactus@ascendproperties.com)  
[www.ascendproperties.com](http://www.ascendproperties.com)

# Ascend

Built on higher standards



## Roper Court, George Leigh Street, Manchester

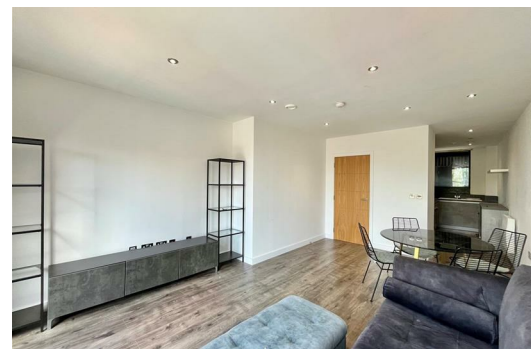
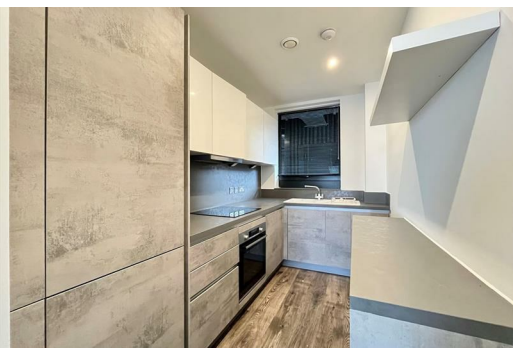
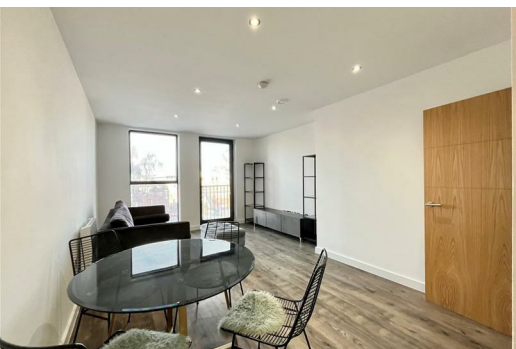
£1,300 PCM

Discover an amazing two-bedroom apartment to rent at Roper Court, George Leigh Street, Ancoats, one of Manchester's most sought-after neighbourhoods. This superb home comes fully furnished and offers a wealth of modern, stylish accommodation, perfect for contemporary city living in the heart of one of the UK's coolest urban locations.

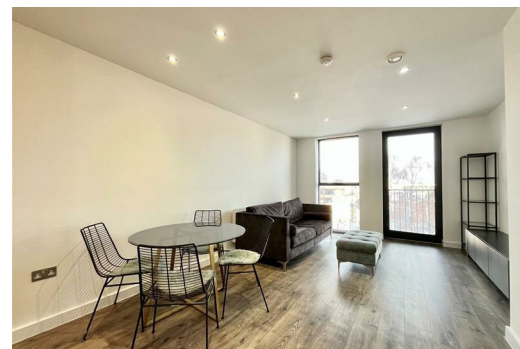
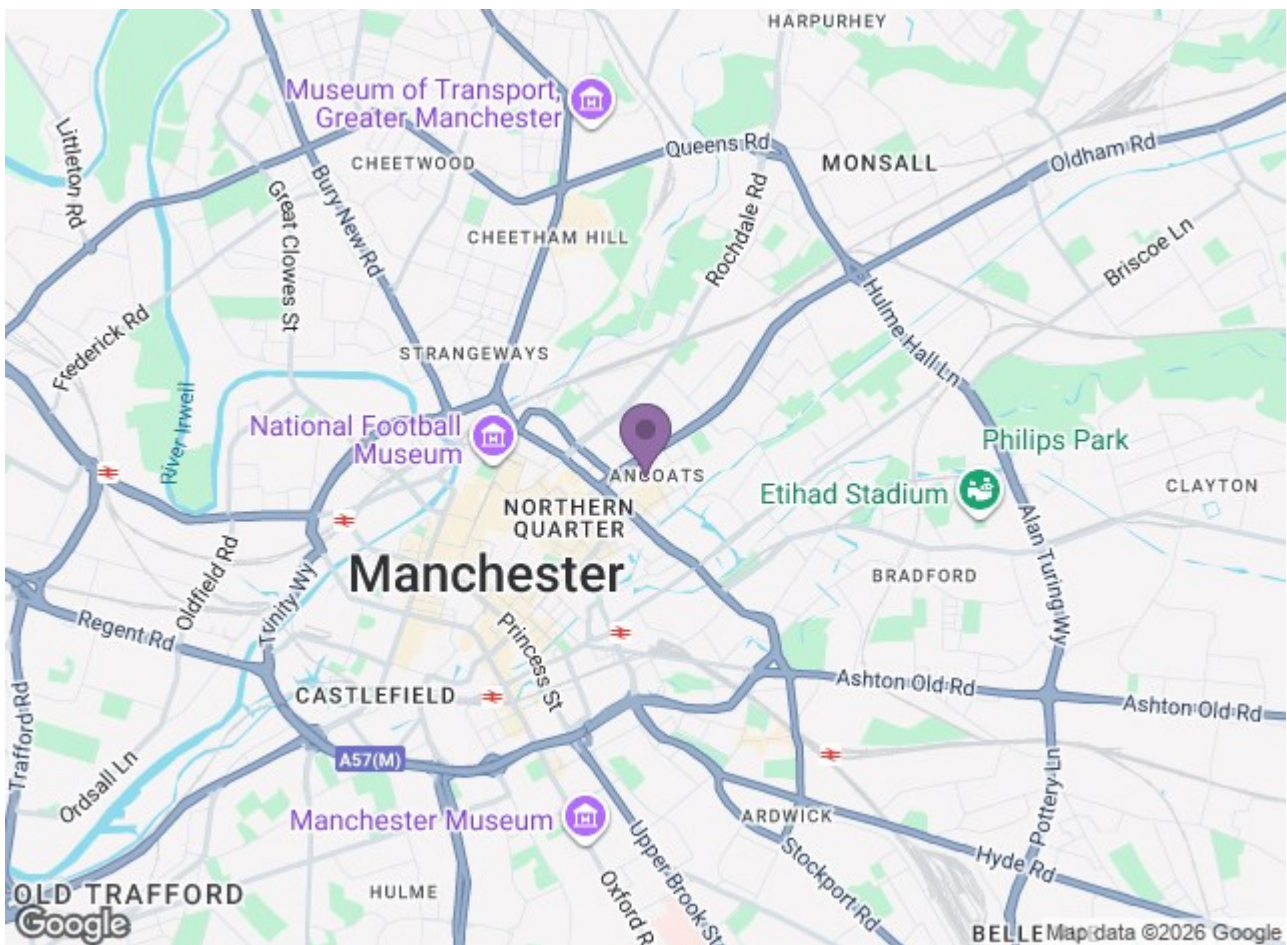
Inside you'll find two well-proportioned bedrooms, a generous open-plan living room and kitchen, and beautifully presented bathrooms. The layout feels bright and spacious, complemented by quality fixtures and fittings throughout. The sizeable living area flows seamlessly into the modern kitchen, ideal for both everyday life and entertaining guests.

Roper Court itself is a lovingly refurbished warehouse conversion that blends industrial heritage with contemporary style, set within the vibrant Ancoats Conservation Area. It's a location that perfectly captures Manchester's mix of history and modern city living.

Ancoats has firmly established itself as one of Manchester's most desirable neighbourhoods, known for its lively cultural scene, independent cafés, artisan bakeries, and top-tier restaurants. You're just moments from Cutting Room Square and New Islington Marina, where you can enjoy waterside strolls, outdoor seating, and some of the best food and drink spots the city has to offer. The famed Northern Quarter with its eclectic nightlife and boutique shops is also within easy reach.







Energy Efficiency Rating			Environmental Impact (CO <sub>2</sub> ) Rating		
Band	Score	Rating	Band	Score	Rating
A	81-89	Very Good	A	1-10	Very Low
B	71-80	Good	B	11-20	Low
C	61-70	Fair	C	21-30	Medium
D	51-60	Fairly Poor	D	31-40	High
E	41-50	Poor	E	41-50	Very High
F	31-40	Very Poor	F	51-60	Extremely High
G	21-30	Extremely Poor	G	61-70	Extremely High
H	1-20	Extremely Poor	H	71-80	Extremely High
I	1-20	Extremely Poor	I	81-90	Extremely High

England & Wales

**Ascend**  
Built on higher standards